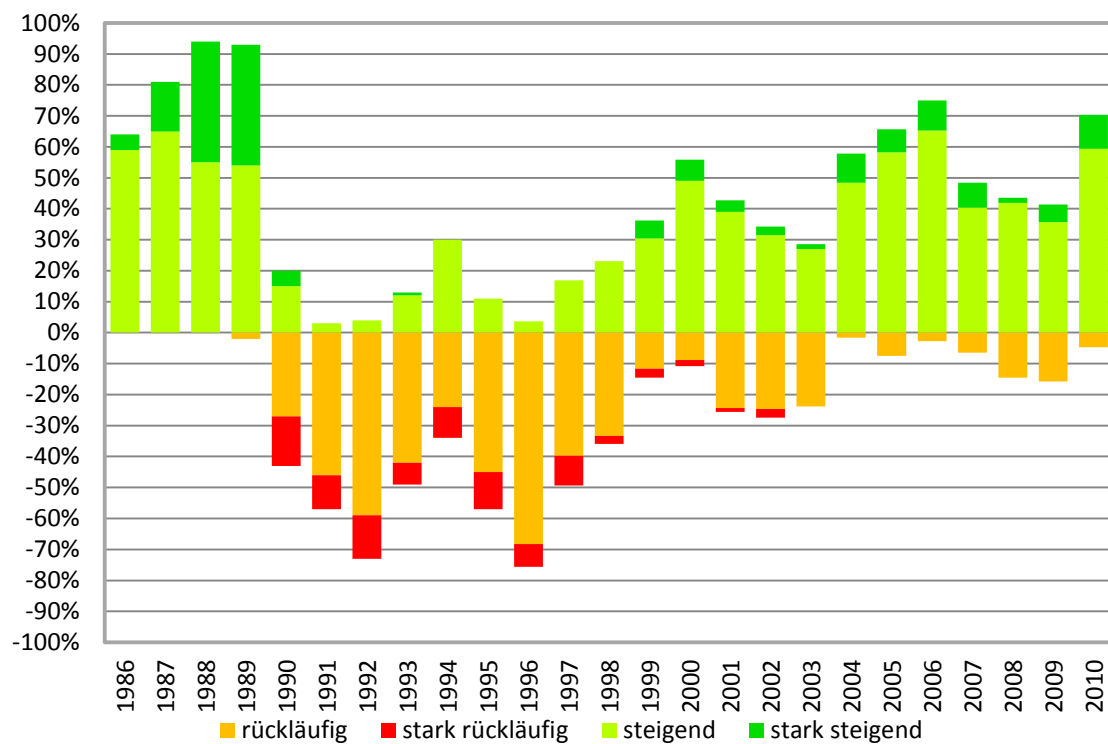


## HEV Immo-Umfrage: Preise Eigentumswohnungen 1986 - 2010



Quelle: HEV Schweiz

	1986	1987	1988	1989	1990	1991	1992	1993	1994	1995	1996	1997	1998	1999	2000	2001	2002	2003	2004	2005	2006	2007	2008	2009	2010
Label	19864 99 14 2	19874 99 14 2	19884 99 14 2	19894 99 14 2	19904 99 14 2	19914 99 14 2	19924 99 14 2	19934 99 14 2	19944 99 14 2	19954 99 14 2	19964 99 14 2	19974 99 14 2	19984 99 14 2	19994 99 14 2	20004 99 14 2	20014 99 14 2	20024 99 14 2	20034 99 14 2	20044 99 14 2	20054 99 14 2	20064 99 14 2	20074 99 14 2	20084 99 14 2	20094 99 14 2	20104 99 14 2
stark rückläufig	0.0%	0.0%	0.0%	0.0%	-16.0%	-11.0%	-14.0%	-7.0%	-10.0%	-12.0%	-7.3%	-9.6%	-2.9%	-2.0%	-1.2%	-2.7%	0.0%	0.0%	0.0%	0.0%	0.0%	0.0%	0.0%	0.0%	0.0%
rückläufig	0.0%	0.0%	0.0%	-2.0%	-27.0%	-46.0%	-59.0%	-42.0%	-24.0%	-45.0%	-68.3%	-39.8%	-33.3%	-11.6%	-8.8%	-24.4%	-23.8%	-1.6%	-7.5%	-2.8%	-6.5%	-14.5%	-15.7%	-4.7%	
stabil	36.0%	19.0%	6.0%	5.0%	37.0%	40.0%	23.0%	38.0%	36.0%	32.0%	20.7%	33.7%	41.0%	49.3%	33.3%	31.7%	38.4%	47.6%	40.6%	26.9%	22.2%	45.2%	41.9%	42.9%	25.0%
steigend	59.0%	65.0%	55.0%	54.0%	15.0%	3.0%	4.0%	12.0%	30.0%	11.0%	3.7%	16.9%	23.1%	30.4%	49.0%	39.0%	31.5%	27.0%	1.6%	58.2%	65.3%	40.3%	41.9%	35.7%	59.4%
stark steigend	5.0%	16.0%	39.0%	39.0%	5.0%	0.0%	0.0%	1.0%	0.0%	0.0%	0.0%	0.0%	0.0%	5.9%	3.7%	2.7%	1.6%	9.4%	7.5%	9.7%	8.1%	1.6%	5.7%	10.9%	
N	n.v.	n.v.	n.v.	n.v.	n.v.	n.v.	n.v.	n.v.	n.v.	n.v.	n.v.	82	83	78	69	102	82	73	63	64	67	72	62	70	64

Lesebeispiel: 2010 melden 59% der Befragten steigende Preise, weitere 11 % sogar stark steigende Preise im Eigentumswohnungssegment. Nur 5% der Befragten stellten 2010 rückläufige Preise in diesem Bereich fest. Der restlichen 25% (in Grafik nicht dargestellt) beobachtete konstante Preise.